



# Legacy

Brackets



Global Experts in Orthodontics

02



## A-Box



A-Box is a gorgeous case for storing and arranging your Experience and Chic brackets. Arranged by quadrant. A box will make the case arrangement easy before bonding.

P/N: 95-00A0-0000

## How are P/Ns built?

Product family	
10	Experience Ceramic
11	Experience Ceramic Mini
14	Chic
15	d.sire
16	Experience L
17	Experience LSB
20	Experience Metal
21	Experience Mini Metal
24	Experience RC
26	Single Edgewise
27	Legacy
28	Legacy mini
29	Twin Edgewise
30	Access
31	Legend Mini
32	Legend Medium
33	Weldable Legend Medium
34	Weldable Legend Mini
35	Begg Style
36	Twin Edgewise T

Slot size	
1	.018"
2	.022"
4	.022" Passive
5	Roth Type .020" x .028"
6	D.sire
7	.030"

Tooth/Kit	
1	A Mandibular 7-7
2	B Mandibular 6-6
3	C Mandibular 5-5
4	D Mandibular 4-4
5	E Mandibular 3-3
6	F Mandibular 2-2
7	

Hook	
0	No hook
D	Distal hook
M	Mesial hook
U	Universal hook
3	3wH / Kit
5	3,4,5wH / Kit

10-1111U-0010

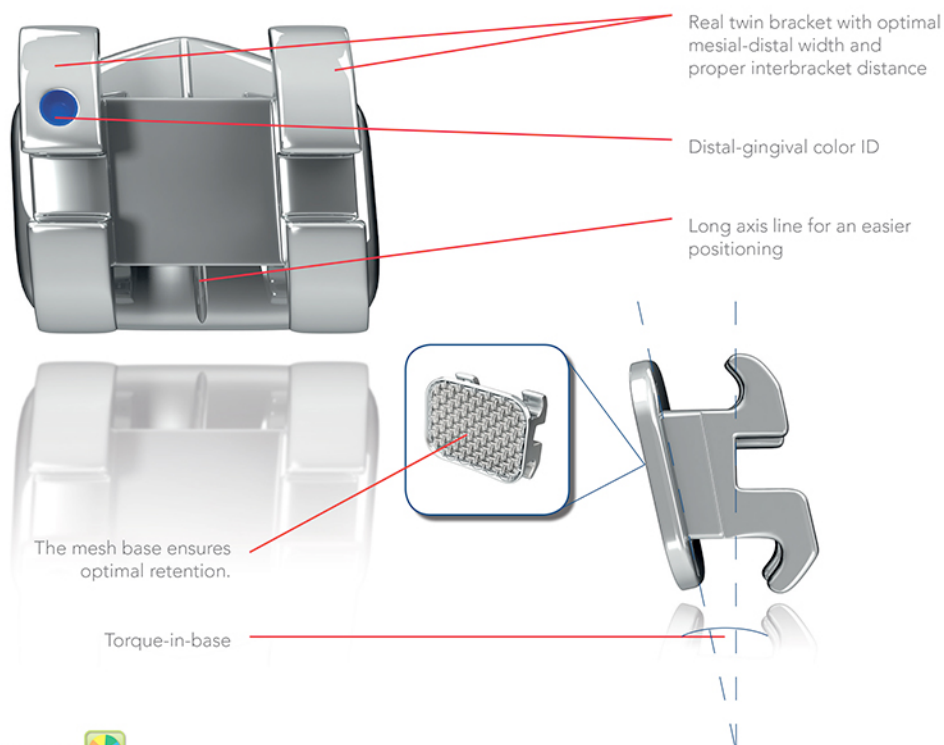
Quadrant/Kit	
0	Universal
1	Maxillary Right
2	Maxillary Left
3	Mandibular Left
4	Mandibular Right
5	Maxillary Universal
6	Mandibular Universal
7	Max./Mand. Universal
A	Maxillary 7-7
B	Maxillary 6-6
C	Maxillary 5-5
D	Maxillary 4-4
E	Maxillary 3-3
F	Maxillary 2-2

Prescription	
10	Roth
20	MBT
30	Extra Torque
40	V-Slot/BI



## Legacy & Legacy Mini

This bracket was programmed according to Dr Roth's philosophy. It is the most accomplished straight wire bracket information-wise. In addition to in/out (1st order), torque, tip and offset are programmed on cuspids and bicuspids in order to correct the effects of parasitic rotations due to positioning mechanics.



### Color codes

For some prescriptions, these color codes may be different on the bicuspids.



# Legacy & Legacy mini

## Legacy Mini Roth Type

### Maxillary

Tooth	I/O mm	Torque (°)	Angulation (°)	Rotation (°)	P/N	
					.022"	
					R	L
U 1	.25	12°	5°	0°	27-2110-0010	27-2210-0010
U 2	.78	8°	9°	0°	27-2120-0010	27-2220-0010
U 3	.25	-2°	13°	4°m	27-2130-0010	27-2230-0010
U 3/Hk	.25	-2°	13°	4°m	27-213D-0010	27-223D-0010
U 3/Hk Special	.25	-2°	9°	4°m	27-213D-0012	27-223D-0012
U 4	.37	-7°	0°	2°d	27-2140-0010	27-2240-0010
U 4/Hk	.37	-7°	0°	2°d	27-214M-0010	27-224M-0010

### Mandibular

Tooth	I/O mm	Torque (°)	Angulation (°)	Rotation (°)	P/N	
					.022"	
					R	L
L 1-2	.97	-1°	2°	0°	27-2410-0010	27-2310-0010
L 1-2/Special Torque	.97	-5°	2°	0°	27-2410-0011	27-2310-0011
L 3	.25	-11°	7°	2°m	27-2430-0010	27-2330-0010
L 3/Hk	.25	-11°	7°	2°m	27-243D-0010	27-233D-0010
L 4/Off. Base	.28	-17°	-1°	4°d	27-2440-0013	27-2340-0013
L 4/Hk	.28	-17°	-1°	4°d	27-244D-0010	27-234D-0010
L 4/Hk, Off. Base	.28	-17°	-1°	4°d	27-244D-0013	27-234D-0013
L 5/Off. Base	.33	-22°	-1°	4°d	27-2450-0013	27-2350-0013
L 5/Hk	.33	-22°	-1°	4°d	27-245D-0010	27-235D-0010
L 5/Hk, Off. Base	.33	-22°	-1°	4°d	27-245D-0013	27-235D-0013



## Legacy Roth Type

### Maxillary

Tooth	I/O mm	Torque (°)	Angulation (°)	Rotation (°)	P/N	
					.022"	
					R	L
U 1	.25	12°	5°	0°	28-2110-0010	28-2210-0010
U 1/xT	.25	17°	5°	0°	28-2110-0011	28-2210-0011
U 2	.78	8°	9°	0°	28-2120-0010	28-2220-0010
U 2/xT	.78	10°	9°	0°	28-2120-0011	28-2220-0011
U 2/Hk	.78	8°	9°	0°	28-212D-0010	28-222D-0010
U 3	.25	-2°	13°	4°m	28-2130-0010	28-2230-0010
U 3/Hk	.25	-2°	13°	4°m	28-213D-0010	28-223D-0010
U 3	.25	3°	13°	4°m	28-2130-0011	28-2230-0011
U 3/Hk	.25	3°	13°	4°m	28-213D-0011	28-223D-0011
U 3	.25	-2°	9°	4°m	28-2130-0012	28-2230-0012
U 3/Hk	.25	-2°	9°	4°m	28-213D-0012	28-223D-0012
U 4	.37	-7°	0°	2°d	28-2140-0010	28-2240-0010
U 4/Hk	.37	-7°	0°	2°d	28-214D-0010	28-224D-0010
U 4/Hk m.	.37	-7°	0°	2°d	28-214M-0010	28-224M-0010

### Mandibular

Tooth	I/O mm	Torque (°)	Angulation (°)	Rotation (°)	.022"	
					R	L
L 1-2	.97	-1°	2°	0°	28-2410-0010	28-2310-0010
L 3	.25	-11°	7°	2°m	28-2430-0010	28-2330-0010
L 3/Hk	.25	-11°	7°	2°m	28-243D-0010	28-233D-0010
L 3/Hk/xT	.25	0°	5°	2°m	28-243D-0011	28-233D-0011
L 4	.28	-17°	-1°	4°d	28-2440-0010	28-2340-0010
L 4/Hk	.28	-17°	-1°	4°d	28-244D-0010	28-234D-0010
L 5	.33	-22°	-1°	4°d	28-2450-0010	28-2350-0010
L 5/Hk	.33	-22°	-1°	4°d	28-245D-0010	28-235D-0010